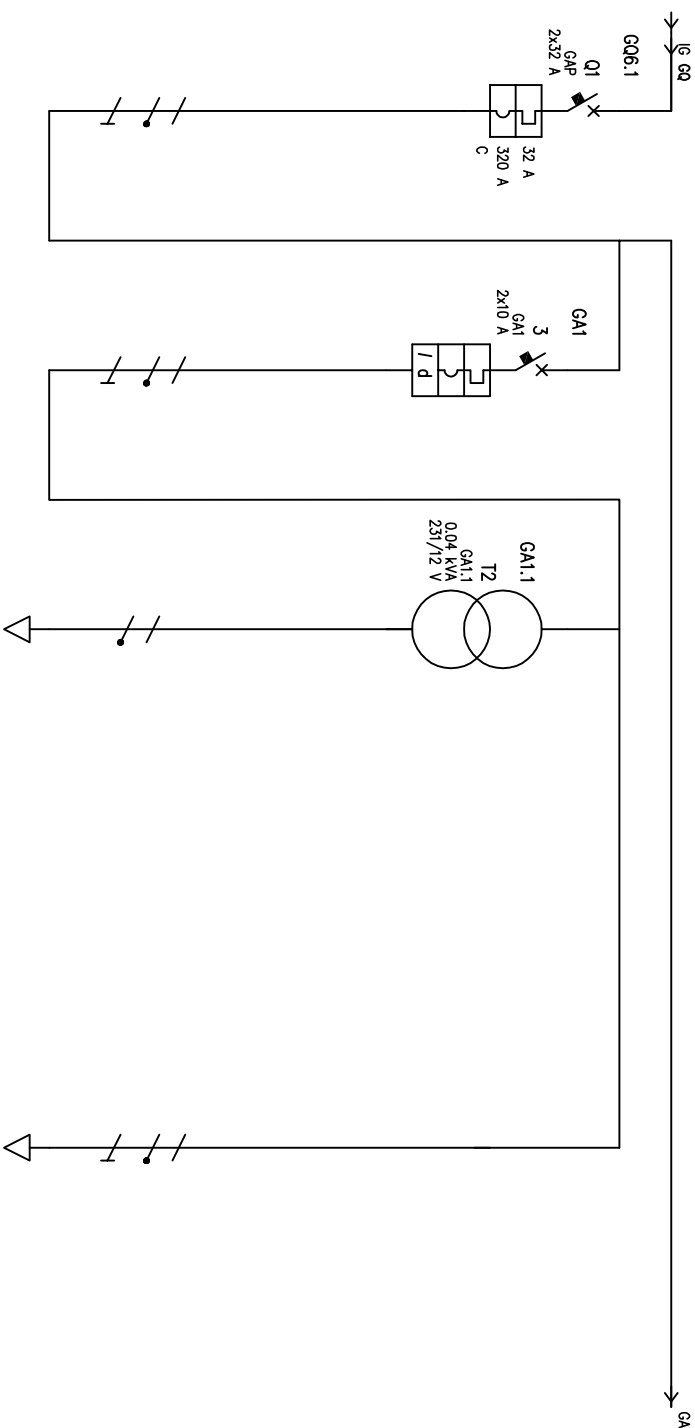


# ALLEGATO FIG.5



UTENZA	DENOMINAZIONE		GEN. APPARTAMENTO		ALIMENTAZIONE LUCE		AUSILIARI		ALIMENTAZIONE LUCE		
	SIGLA	POTENZA TOT. kW	TT/L1-N	GAP	TT/L1-N	GAI	TT/L1-N	GAI.1	TT/L1-N	GAI.2	
	TIPO	kW	6	7.39	1	2.31	1	0.03	1	2.31	
	POTENZA	lb	28.9		4.83		0.156		4.83		
	COEF. CONTEMP.	COS φ	1	0.9	1	0.904	1	0.834	1	0.906	
	COSTRUTTORE										
	ABB Elettrocondutture										
	S 272-C										
	N.POLL	In	2	32	2	10					
	Ih	A	32		10	0.03					
	I <sub>m</sub> (o curvo)	A	320		100	4.5					
	TIPO										
	ABB										
	CALIBRO										
	A										
	TIPO										
	A										
	Pn										
	kW										
	A										
	TIPO										
	FG70R 0,6/1 kV										
	FORMAZIONE										
	3G16										
	LUNGHEZZA										
	1										
	A										
	82.8										
	C.d.T. q lb										
	2.99										
	0.033										
	Zk										
	738.8										
	mΩ										
	190.3										
	I <sub>k</sub> trifase/monof. kA										
	1.27										
	kA										
	0.33										
	NUMERAZIONE MORSETTIERA										
	A										
	14.5										
	2.36										
	190.3										
	1.27										
	A										
	82.8										
	0.033										
	2.36										
	190.3										
	1.27										
	A										
	14.5										
	2.36										
	190.3										
	1.27										
	A										
	82.8										
	0.033										
	2.36										
	190.3										
	1.27										
	A										
	14.5										
	2.36										
	190.3										
	1.27										
	A										
	82.8										
	0.033										
	2.36										
	190.3										
	1.27										
	A										
	14.5										
	2.36										
	190.3										
	1.27										
	A										
	82.8										
	0.033										
	2.36										
	190.3										
	1.27										
	A										
	14.5										
	2.36										
	190.3										
	1.27										
	A										
	82.8										
	0.033										
	2.36										
	190.3										
	1.27										
	A										
	14.5										
	2.36										
	190.3										
	1.27										
	A										
	82.8										
	0.033										
	2.36										
	190.3										
	1.27										
	A										
	14.5										
	2.36										
	190.3										
	1.27										
	A										
	82.8										
	0.033										
	2.36										
	190.3										
	1.27										
	A										
	14.5										
	2.36										
	190.3										
	1.27										
	A										
	82.8										
	0.033										
	2.36										
	190.3										
	1.27										
	A										
	14.5										
	2.36										
	190.3										
	1.27										
	A										
	82.8										
	0.033										
	2.36										
	190.3										
	1.27										
	A										
	14.5										
	2.36										
	190.3										
	1.27										
	A										
	82.8										
	0.033										
	2.36										
	190.3										
	1.27										
	A										
	14.5										
	2.36										
	190.3										
	1.27										
	A										
	82.8										
	0.033										
	2.36										
	190.3										
	1.27										
	A										
	14.5										
	2.36										
	190.3										
	1.27										
	A										
	82.8										
	0.033										
	2.36										
	190.3										
	1.27										
	A										
	14.5										
	2.36										
	190.3										
	1.27										
	A										
	82.8										
	0.033										
	2.36										
	190.3										
	1.27										
	A										
	14.5										
	2.36										
	190.3										
	1.27										
	A										
	82.8										
	0.033										
	2.36										
	190.3										
	1.27										
	A										
	14.5										
	2.36										
	190.3										
	1.27										
	A										
	82.8										
	0.033										
	2.36										
	190.3										
	1.27										
	A										
	14.5										
	2.36										
	190.3										
	1.27										
	A										
	82.8										
	0.033										
	2.36										
	190.3										
	1.27										
	A										
	14.5										
	2.36										
	190.3										
	1.27										
	A										
	82.8										
	0.033										
	2.36										
	190.3										
	1.27										
	A										
	14.5										
	2.36										
	190.3										
	1.27										
	A										
	82.8										
	0.033										
	2.36										
	190.3										
	1.27										
	A										
	14.5										
	2.36										
	190.3										
	1.27										
	A										
	82.8										
	0.033										
	2.36										
	190.3										
	1.27										
	A										
	14.5										
	2.36										
	190.3										
	1.27										
	A										
	82.8										
	0.033										
	2.36										
	190.3										
	1.27										
	A										
	14.5										
	2.36										
	190.3										
	1.27										
	A										
	82.8										
	0.033										
	2.36										
	190.3										
	1.27										
	A										
	14.5										
	2.36										
	190.3										
	1.27										
	A										
	82.8										
	0.033										
	2.36										
	190.3										
	1.27										
	A										
	14.5										
	2.36										
	190.3										
	1.27										
	A										
	82.8										
	0.033										
	2.36										
	190.3										
	1.27										
	A										
	14.5										
	2.36										
	190.3										
	1.27										
	A										
	82.8										
	0.033										
	2.36										
	190.3										
	1.27										
	A										
	14.5										
	2.36										
	190.3										
	1.27										
	A										
	82.8										
	0.033										
	2.36										
	190.3										
	1.27										
	A										
	14.5										
	2.36										
	190.3										
	1.27										
	A										
	82.8										
	0.033										
	2.36										
	190.3										
	1.27										
	A										
	14.5										
	2.36										
	190.3										
	1.27										
	A										
	82.8										
	0.033										
	2.36										
	190.3										
	1.27										
	A										
	14.5										
	2.36										
	190.3										
	1.27										
	A										
	82.8										
	0.033										
	2.36										
	190.3										
	1.27										
	A										
	14.5										
	2.36										
	190.3										
	1.27										
	A										
	82.8										
	0.033										
	2.36										
	190.3										
	1.27										
	A										
	14.5										
	2.36										
	190.3										
	1.27										
	A										
	82.8										
	0.033										
	2.36										
	190.3										
	1.27										
	A										
	14.5										
	2.36										
	190.3										
	1.27										
	A										
	82.8										
	0.033										
	2.36										
	190.3										
	1.27										
	A										
	14.5										
	2.36										
	190.3										
	1.27										
	A										
	82.8										
	0.033										
	2.36										
	190.3										
	1.27										
	A										
	14.5										
	2.36										
	190.3										
	1.27										
	A										
	82.8										
	0.033										
	2.36										
	190.3										
	1.27										
	A										
	14.5										
	2.36										
	190.3										
	1.27										
	A										
	82.8										
	0.033										
	2.36										
	190.3										
	1.27										
	A										
	14.5										
	2.36										
	190.3										
	1.27										
	A										
	82.8										
	0.033										
	2.36										
	190.3										
	1.27										
	A										
	14.5										
	2.36										
	190.3										
	1.27										
	A										
	82.8										
	0.033										
	2.36										
	190.3										
	1.27										
	A										
	14.5										
	2.36										
	190.3										
	1.27										